



Public Hearing:
Paso Basin – Co. of SLO Groundwater Sustainability Agency

May 16, 2017

Wade Horton, Public Works Director
Carolyn Berg, Senior Water Resources Engineer

www.slocounty.ca.gov

Today's Hearing

- SGMA Overview
- SGMA Strategy
- Paso Basin – Co. of SLO GSA Formation
- Public Comment



COUNTY OF SAN LUIS OBISPO

www.slocounty.ca.gov

SGMA Overview



COUNTY OF SAN LUIS OBISPO

www.slocounty.ca.gov

SGMA: The Basics

Local management of groundwater

No uncovered basins

County management option

State as backstop

Specific exemptions for listed adjudicated basins

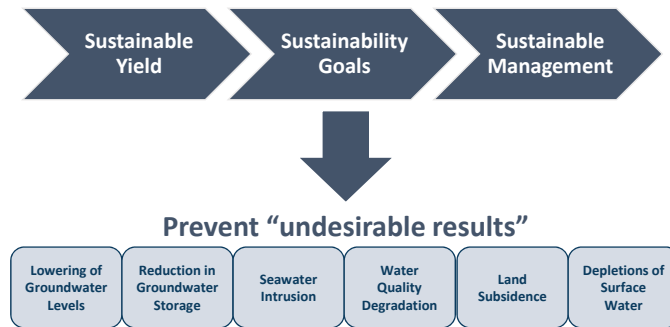
Goal:
Sustainability
within 20 years



COUNTY OF SAN LUIS OBISPO

www.slocounty.ca.gov

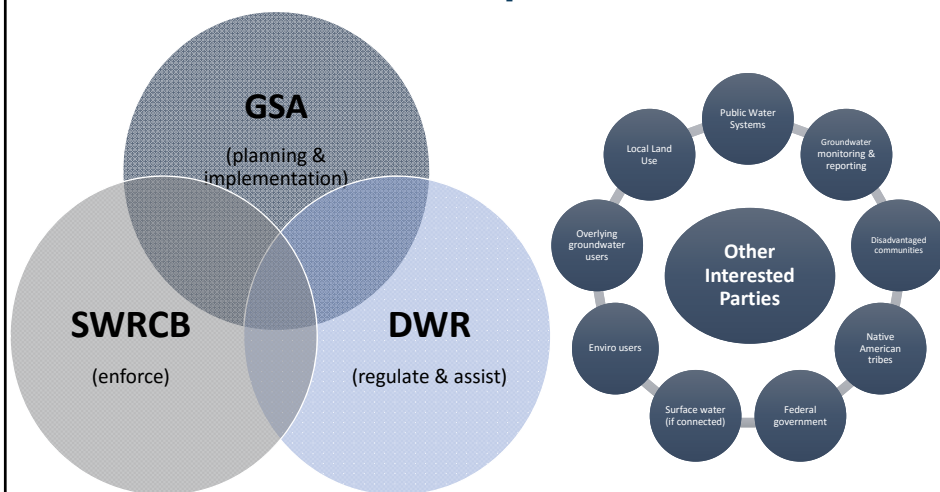
SGMA: The Basics



COUNTY OF SAN LUIS OBISPO

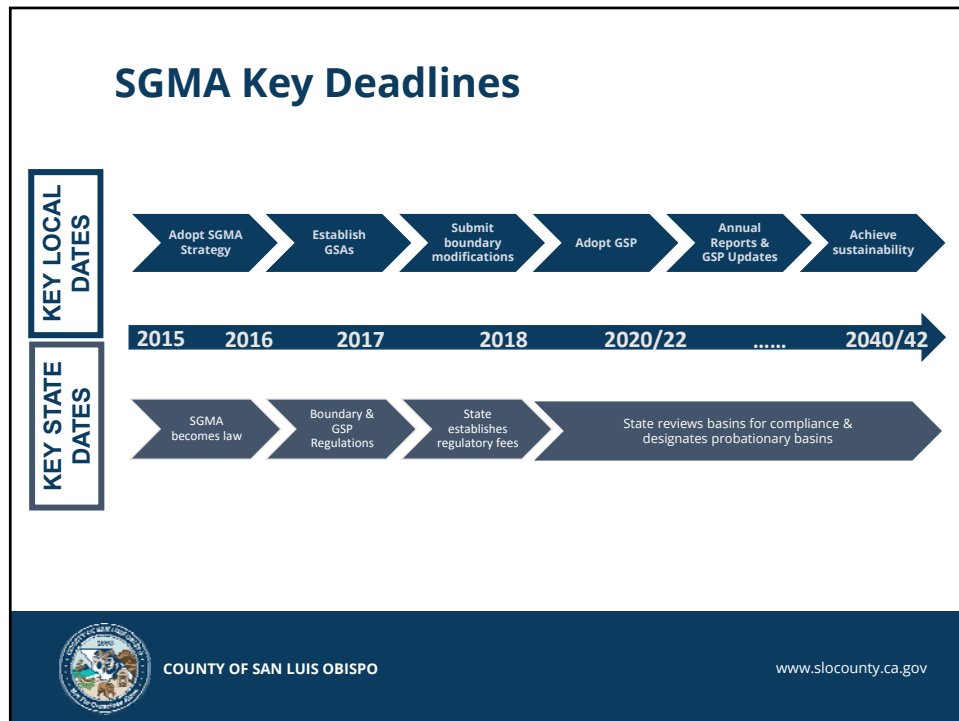
www.slocounty.ca.gov

General Roles & Responsibilities



COUNTY OF SAN LUIS OBISPO

www.slocounty.ca.gov



SGMA Strategy

*Establish **community focused GSAs** based on **cooperative interagency and stakeholder relationships** in order to **comply with SGMA** requirements*



COUNTY OF SAN LUIS OBISPO

www.slocounty.ca.gov

Paso Basin – County of SLO GSA Formation



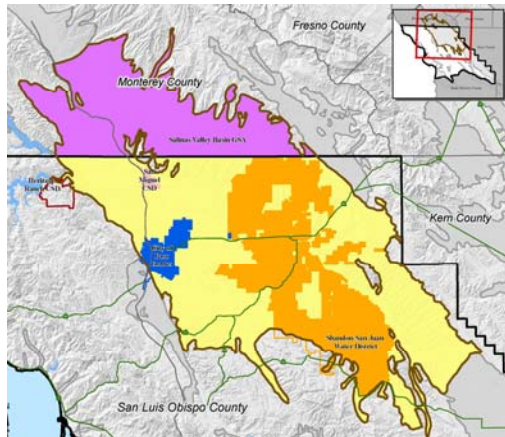
COUNTY OF SAN LUIS OBISPO

www.slocounty.ca.gov

Potential Paso Basin GSAs by June 30th

GSA Deadline: 6/30/2017

GSP Deadline: 1/31/2020



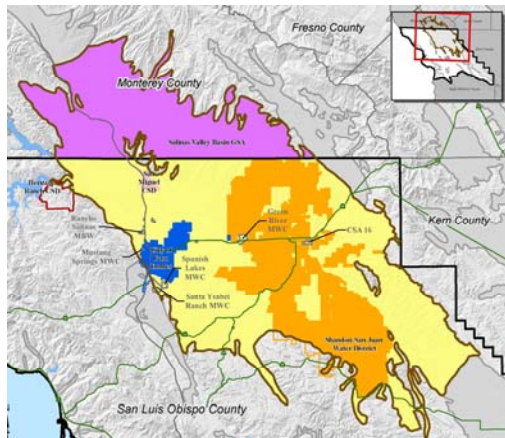
COUNTY OF SAN LUIS OBISPO

www.slocounty.ca.gov

Potential Paso Basin GSAs by June 30th

GSA Deadline: 6/30/2017

GSP Deadline: 1/31/2020



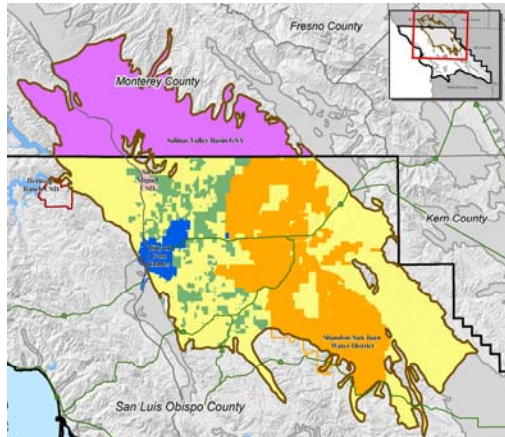
COUNTY OF SAN LUIS OBISPO

www.slocounty.ca.gov

Potential Paso Basin GSAs by Dec. 31st

GSA Deadline: 6/30/2017

GSP Deadline: 1/31/2020



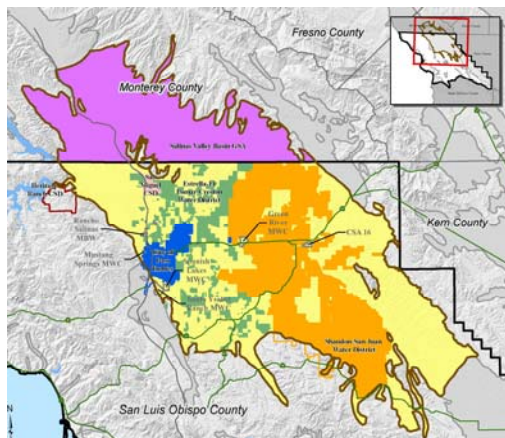
COUNTY OF SAN LUIS OBISPO

www.slocounty.ca.gov

Potential Paso Basin GSAs by Dec. 31st

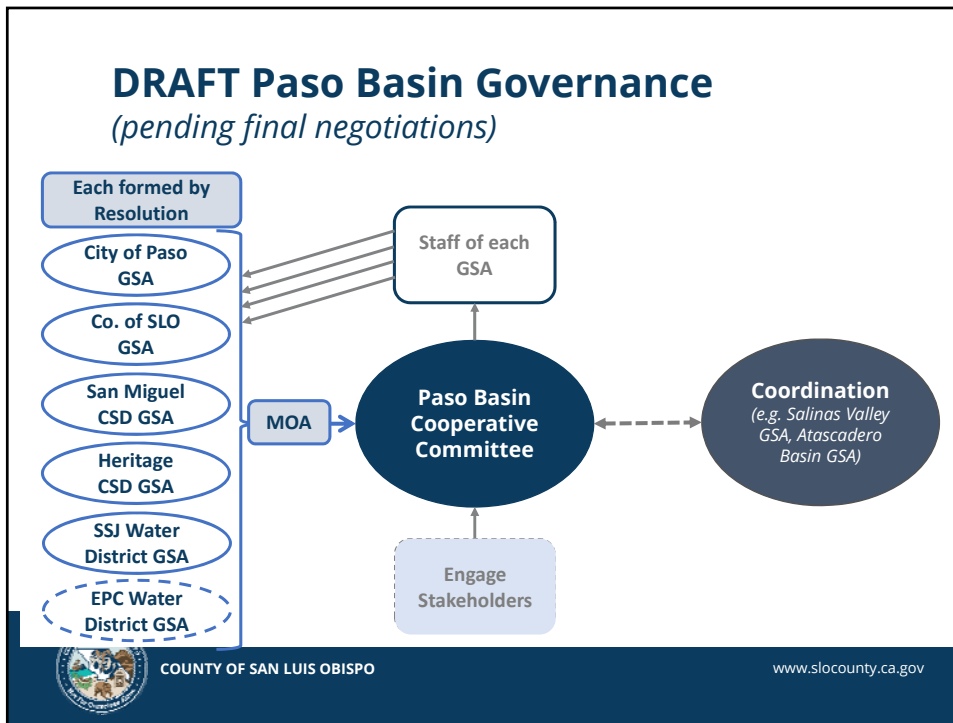
GSA Deadline: 6/30/2017

GSP Deadline: 1/31/2020



COUNTY OF SAN LUIS OBISPO

www.slocounty.ca.gov



DRAFT Paso Basin MOA Terms

(pending final negotiations)

GSA	DRAFT Voting / Cost Share	
	With EPCWD/ Once formed	Without EPCWD/ Until formed
County of SLO	24%	57%
City of Paso Robles	15%	15%
Shandon-San Juan Water District	24%	24%
San Miguel CSD	3%	3%
Heritage Ranch CSD	1%	1%
<i>If formed: Estrella-El Pomar-Creston Water District</i>	33%	--
TOTAL	100%	100%

Draft allocations negotiated based on:

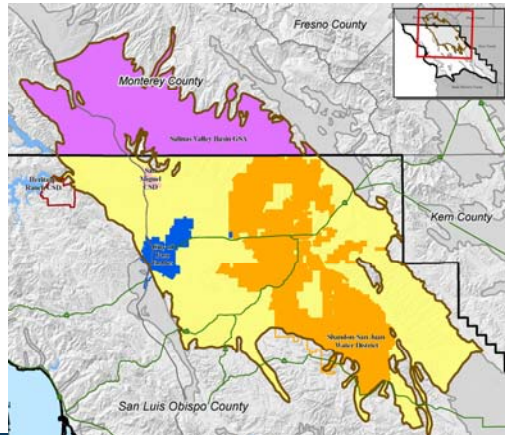
- Estimated groundwater use
- Funding equity

COUNTY OF SAN LUIS OBISPO www.slocounty.ca.gov

Paso Basin GSAs by June 30th

GSA Deadline: 6/30/2017

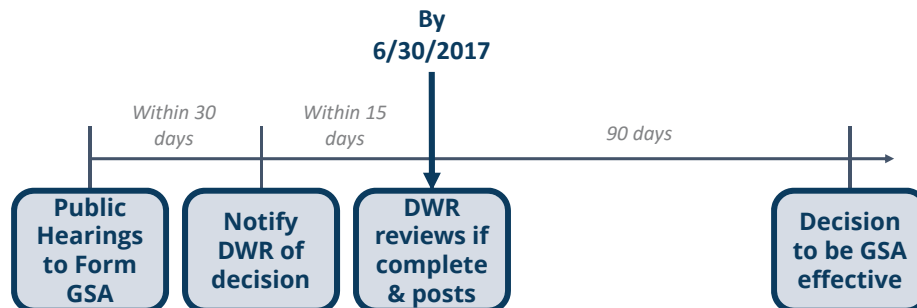
GSP Deadline: 1/31/2020



COUNTY OF SAN LUIS OBISPO

www.slocounty.ca.gov

Next Steps of GSA Formation




COUNTY OF SAN LUIS OBISPO

www.slocounty.ca.gov



Recommendation

- Adoption of a resolution:
 - Forming the Paso Basin – Co of SLO GSA
 - Finding that the action is exempt from CEQA
- Provide staff direction

 COUNTY OF SAN LUIS OBISPO www.slocounty.ca.gov



Thank you!

For more information, join our email list:
www.slocountywater.org/sgma

www.slocounty.ca.gov

Comments



COUNTY OF SAN LUIS OBISPO

www.slocounty.ca.gov