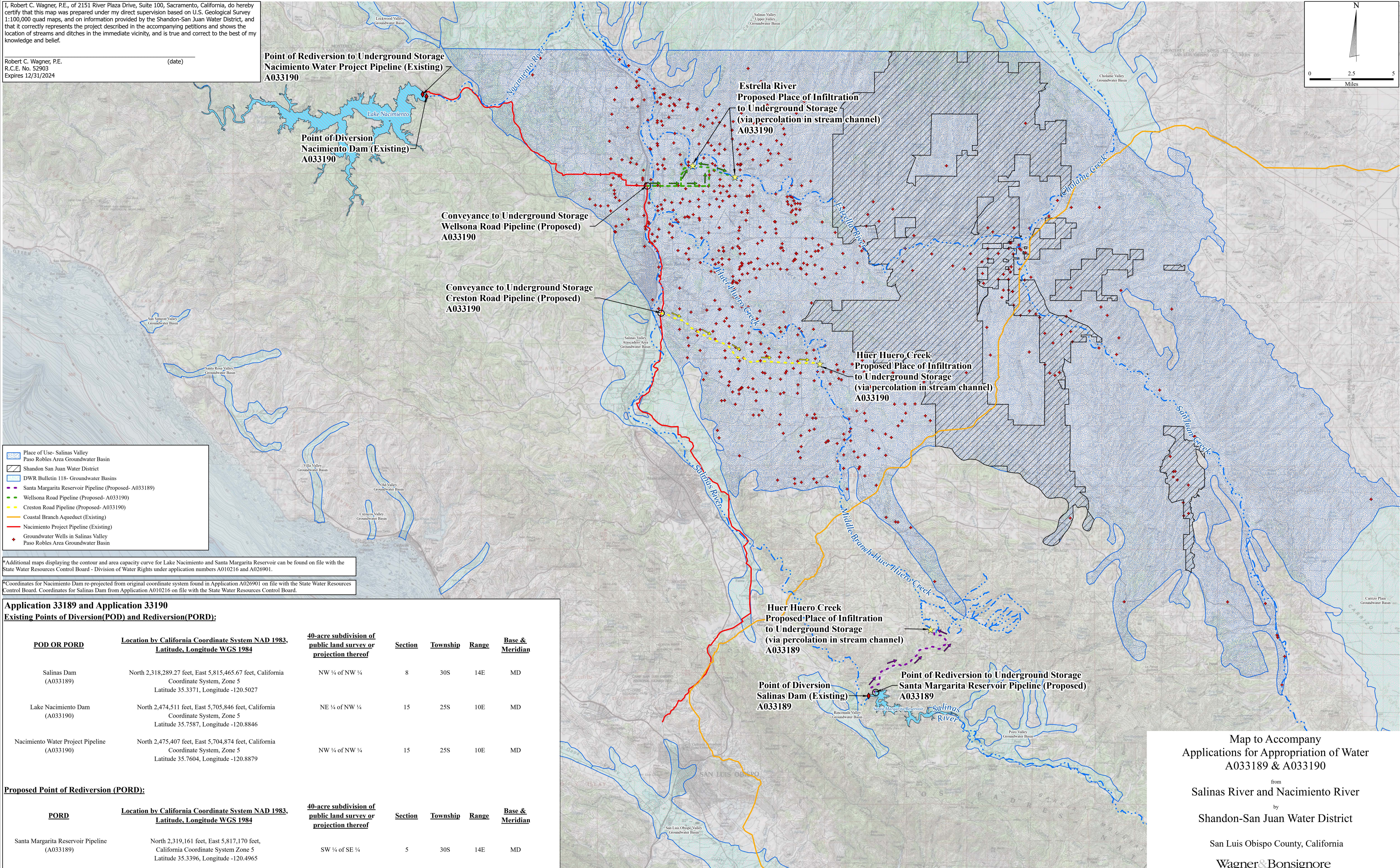
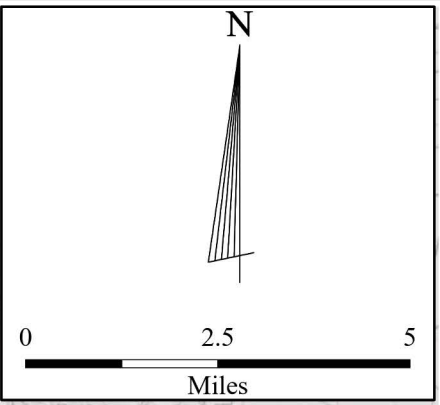


I, Robert C. Wagner, P.E., of 2151 River Plaza Drive, Suite 100, Sacramento, California, do hereby certify that this map was prepared under my direct supervision based on U.S. Geological Survey 1:100,000 quad maps, and on information provided by the Shandon-San Juan Water District, and that it correctly represents the project described in the accompanying petitions and shows the location of streams and ditches in the immediate vicinity, and is true and correct to the best of my knowledge and belief.

Robert C. Wagner, P.E. (date)  
 R.C.E. No. 52903  
 Expires 12/31/2024



**Point of Diversion  
 Nacimiento Dam (Existing)  
 A033190**

**Point of Rediversion to Underground Storage  
 Nacimiento Water Project Pipeline (Existing)  
 A033190**

**Estrella River  
 Proposed Place of Infiltration  
 to Underground Storage  
 (via percolation in stream channel)  
 A033190**

**Conveyance to Underground Storage  
 Wellsona Road Pipeline (Proposed)  
 A033190**

**Conveyance to Underground Storage  
 Creston Road Pipeline (Proposed)  
 A033190**

**Huer Huero Creek  
 Proposed Place of Infiltration  
 to Underground Storage  
 (via percolation in stream channel)  
 A033190**

**Huer Huero Creek  
 Proposed Place of Infiltration  
 to Underground Storage  
 (via percolation in stream channel)  
 A033189**

**Point of Diversion  
 Salinas Dam (Existing)  
 A033189**

**Point of Rediversion to Underground Storage  
 Santa Margarita Reservoir Pipeline (Proposed)  
 A033189**

- Place of Use- Salinas Valley
- Paso Robles Area Groundwater Basin
- Shandon San Juan Water District
- DWR Bulletin 118- Groundwater Basins
- Santa Margarita Reservoir Pipeline (Proposed- A033189)
- Wellsona Road Pipeline (Proposed- A033190)
- Creston Road Pipeline (Proposed- A033190)
- Coastal Branch Aqueduct (Existing)
- Nacimiento Project Pipeline (Existing)
- Groundwater Wells in Salinas Valley
- Paso Robles Area Groundwater Basin

\*Additional maps displaying the contour and area capacity curve for Lake Nacimiento and Santa Margarita Reservoir can be found on file with the State Water Resources Control Board - Division of Water Rights under application numbers A010216 and A026901.

\*Coordinates for Nacimiento Dam re-projected from original coordinate system found in Application A026901 on file with the State Water Resources Control Board. Coordinates for Salinas Dam from Application A010216 on file with the State Water Resources Control Board.

**Application 33189 and Application 33190  
 Existing Points of Diversion(POD) and Rediversion(PORD):**

| <u>POD OR PORD</u>                             | <u>Location by California Coordinate System NAD 1983,<br/>Latitude, Longitude WGS 1984</u>  | <u>40-acre subdivision of<br/>public land survey or<br/>projection thereof</u> | <u>Section</u> | <u>Township</u> | <u>Range</u> | <u>Base &amp;<br/>Meridian</u> |
|--|---|--|----------------|-----------------|--------------|--------------------------------|
| Salinas Dam<br>(A033189)                       | North 2,318,289.27 feet, East 5,815,465.67 feet, California<br>Coordinate System, Zone 5<br>Latitude 35.3371, Longitude -120.5027 | NW ¼ of NW ¼   | 8              | 30S             | 14E          | MD                             |
| Lake Nacimiento Dam<br>(A033190)               | North 2,474,511 feet, East 5,705,846 feet, California<br>Coordinate System, Zone 5<br>Latitude 35.7587, Longitude -120.8846       | NE ¼ of NW ¼   | 15             | 25S             | 10E          | MD                             |
| Nacimiento Water Project Pipeline<br>(A033190) | North 2,475,407 feet, East 5,704,874 feet, California<br>Coordinate System, Zone 5<br>Latitude 35.7604, Longitude -120.8879       | NW ¼ of NW ¼   | 15             | 25S             | 10E          | MD                             |

**Proposed Point of Rediversion (PORD):**

| <u>PORD</u>                                     | <u>Location by California Coordinate System NAD 1983,<br/>Latitude, Longitude WGS 1984</u>                                 | <u>40-acre subdivision of<br/>public land survey or<br/>projection thereof</u> | <u>Section</u> | <u>Township</u> | <u>Range</u> | <u>Base &amp;<br/>Meridian</u> |
|---|--|--|----------------|-----------------|--------------|--------------------------------|
| Santa Margarita Reservoir Pipeline<br>(A033189) | North 2,319,161 feet, East 5,817,170 feet,<br>California Coordinate System Zone 5<br>Latitude 35.3396, Longitude -120.4965 | SW ¼ of SE ¼   | 5              | 30S             | 14E          | MD                             |

Map to Accompany  
 Applications for Appropriation of Water  
 A033189 & A033190

from  
 Salinas River and Nacimiento River  
 by  
 Shandon-San Juan Water District

San Luis Obispo County, California

Wagner & Bonsignore  
 Consulting Civil Engineers, A Corporation

Well Data per GSI Water Solutions Inc., June 18, 2024.  
 Basemap per USGS 1:100,000 quad maps for San Luis Obispo, CA (1981) and Paso Robles, CA (1989).  
 Water Service Area and Proposed Project Features per Shandon-San Juan Water District, 2022.  
 Stream and Lake Data per California Department of Fish and Wildlife, published https://wildlife.ca.gov/Data/GIS/Clearinghouse accessed June 13, 2024.



| River Reach            | Legend | Upstream Limit                                      | Downstream Limit                                    | Reach Length (Miles) |
|------------------------|--------|---|---|----------------------|
| 1                      |        | Salinas Dam   | USGS Gauge 11147500<br>Salinas River at Paso Robles | 32.87                |
| 2                      |        | USGS Gauge 11147500<br>Salinas River at Paso Robles | USGS Gauge 11150500<br>Salinas River near Bradley   | 28.31                |
| 3                      |        | USGS Gauge 11150500<br>Salinas River near Bradley   | USGS Gauge 11151700<br>Salinas River at Soledad     | 50.83                |
| 4                      |        | USGS Gauge 11151700<br>Salinas River at Soledad     | Pacific Ocean                                       | 47.25                |
| Lower Nacimiento River |        | Nacimiento Dam                                      | Confluence with Salinas River                       | 12.42                |

**Figure 1**  
 Map to Accompany Preliminary  
 Water Availability Analysis  
 for  
 Application A033190  
 San Luis Obispo County, California  
**Wagner & Bonsignore**  
 Consulting Civil Engineers, A Corporation